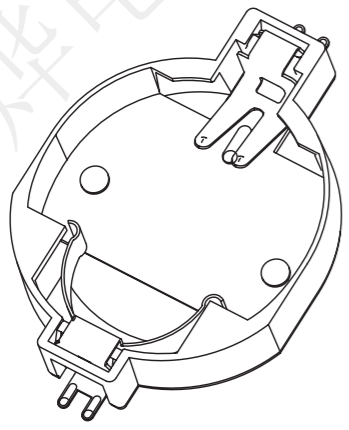
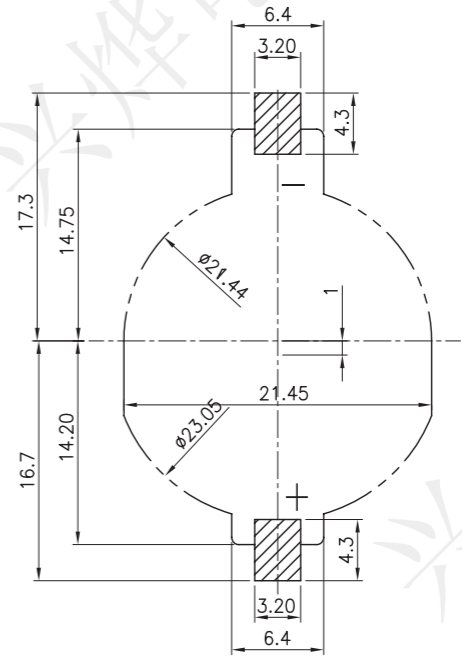
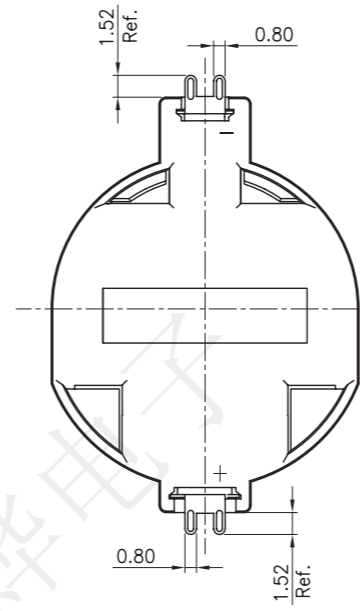
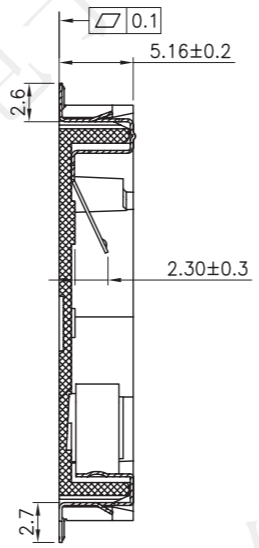
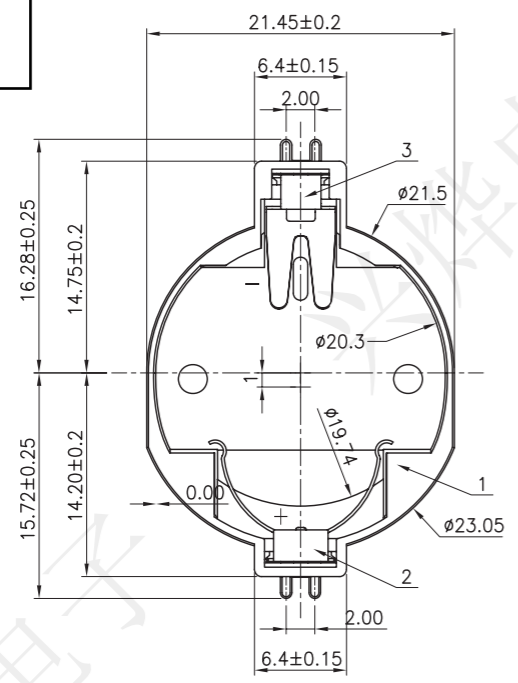


REV.	ECN NO.	DESCRIPTION	DRAW	APPD	DATE
A	---				

受控文件



ORDERING INFORMATION

BS-10-A**0*001

- 电池座系列
- BS-10系列
- SMT 180° TYPE
- MATERIAL:
 - 1A-PBT WHITE
 - 1B-PBT BLACK
 - 2A-PPS WHITE
 - 2B-PPS BROWN
 - 3A-PPA WHITE
 - 3B-PPA BROWN
- PLATING:
 - J-Au1U"
 - K-Au30U"
- CRUST:
 - O-WITHOUT

- NOTE:
- MATERIAL:
 - a.HOUSING:THERMOPLASTIC GLASS FIBRE UL94V-0
 - b.CONTACT:PHOSPHOR BRONZE (SURFACE PLATING: Au*U")
 - ELECTRIC:
 - a.CONTACT RESISTANCE: 30 MILLIOHMS MAX
 - b.INSULATION RESISTANCE: 1000 MEGA OHMS MIN
 - c.DIELECTNIC VOLTAGE: 750V AC ONE SEC LEVEL
 - d.OPERATING TEMPERATURE: -55° C~ +85° C

Recommend PCB Layout
PCB Top View



3	SPRING(-)		1	Phosphor Bronze, T=0.20	Au-Plated
2	SPRING(+)		1	Phosphor Bronze, T=0.20	Au-Plated
1	HOUSING		1	PPS	Black
NO.	PART NAME	TER'NO.	Q'TY	MATERIAL	PLATING & COLOR

深圳市兴烨电子有限公司
Shenzhen XingYe Electronics co., Ltd

TOLERANCE		
X.X	±0.30	X.° ±2°
XX	±0.20	.X° ±1°
XXX	±0.10	.XX° ±0.5°
UNITS	mm	

Series Name :	
Product Description :	BATTERY HOLDER CR2032 BS-10
Part NO:	BCD10016
SCALE	1:1
SHEET	1/1
REV.	A1

APPD: 陈爱光
CHED: 施立敏
DRAW: 马洪飞