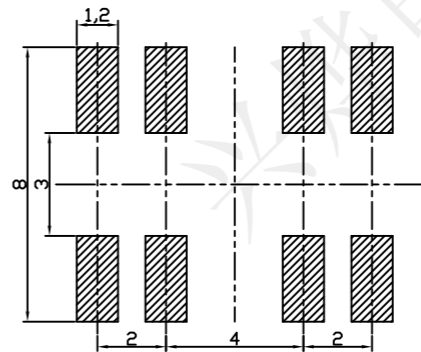
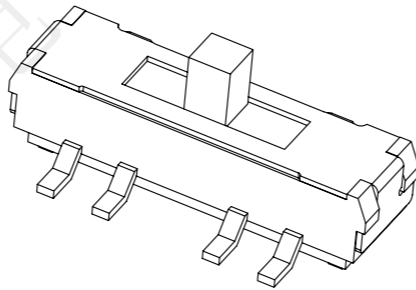
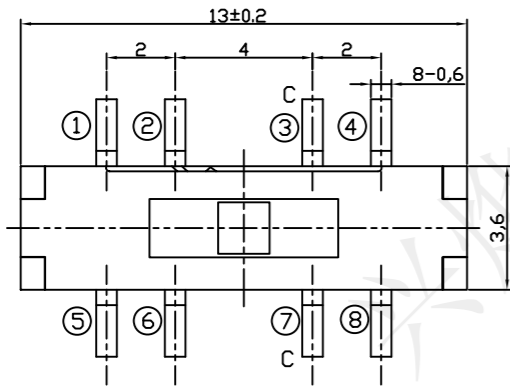
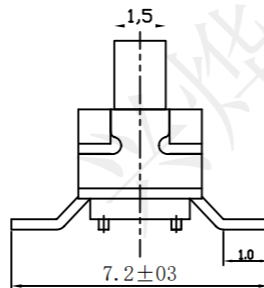
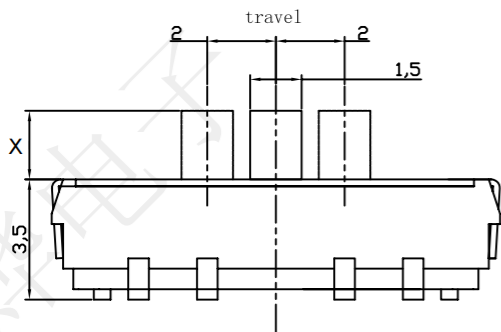
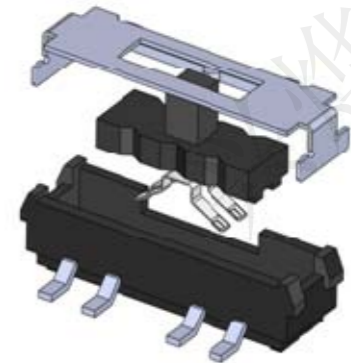
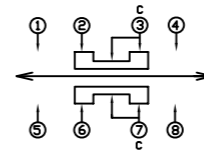


REV.	ECN NO.	DESCRIPTION	DRAW	APPD	DATE

P. C. B MOUNTING PATTERN DIMENSION
the following soldering are recommended
for reflow soldering



CIRCUIT DIAGRAM



受控文件

SPECIFICATION:
Operating temperature:-20℃~85℃
Rated loading:DC 6V 0.3A
Contact resistance:70mΩMax
Insulation resistance:100MΩ Min
Withstanding voltage:AC 500V (50-60Hz) /min
Electrical Life:10000 cycles

5	盖板	不锈钢	1	本色
2	手柄	6T	1	黑色
3	簧片	磷青铜镀银	1	银白色
2	基座	6T	1	黑色
1	端子	黄铜镀银	1	银白色
NO.	PARTS	MATERIAL	QTY.	FINISHING

		Series Name :	
		Product Name : MSS-23D20 八脚立贴	
TOLERANCE		APPD: 陈爱光	
X.X ±0.30	X° ±2°	CHED: 施立敏	
.XX ±0.20	.X° ±1°	DRAW: 马洪飞	
.XXX ±0.10	.XX° ±0.5°		
UNITS	mm		

Part NO: SKL20030		
SCALE 1:1	SHEET 1/1	REV. A1