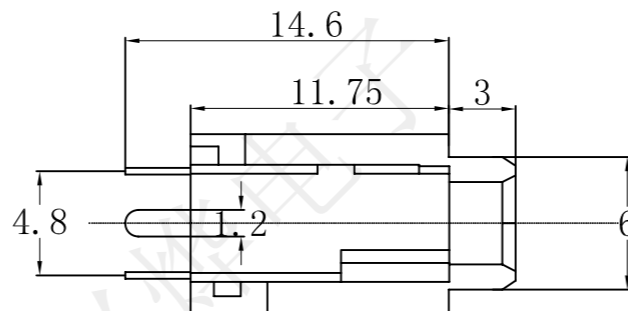
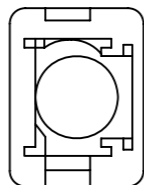
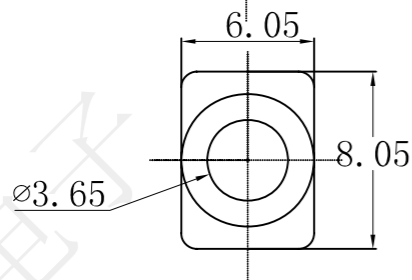
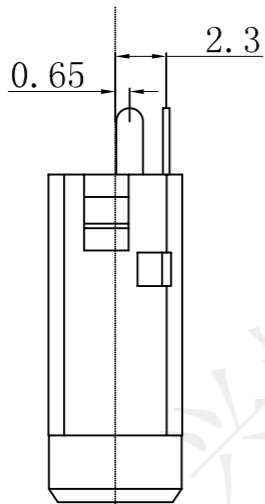
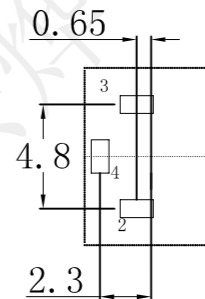


REV.	ECN NO.	DESCRIPTION	DRAW	APPD.	DATE
A	---				



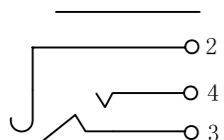
线路板开孔尺寸



受控文件

SPECIFICATION:
 Operating temperature: -30 °C~70 °C
 Rated loading: DC 30V 0.5A
 Contact resistance: 30mΩ Max
 Insulation resistance: 100MΩ Min
 Withstanding voltage: AC 500V (50Hz) /min
 Insertion force: 3-20N
 Pullout force: 3-20N
 Life: 5000 CYCLES

电路原理图



4	基座	1	PA66/PBT	黑/配色
3	4#接触脚	1	锡青磷铜带 $\delta = 0.30\text{mm}$	
2	3#接触脚	1	H62 (Y) 黄铜带 $\delta = 0.30\text{mm}$	
1	2#接触脚	1	H62 (Y) 黄铜带 $\delta = 0.30\text{mm}$	
序号	名称	数量	材料	备注

深圳市兴烨电子有限公司
 Shenzhen XingYe Electronics co., Ltd

TOLERANCE		
X.X	± 0.30	X.° $\pm 2^\circ$
.XX	± 0.20	.X.° $\pm 1^\circ$
.XXX	± 0.10	.XX.° $\pm 0.5^\circ$
UNITS	mm	

APPD: 陈爱光
 CHED: 施立敏
 DRAW: 马洪飞

Series Name :			
Product Name :	PJ-3590直插		
Part NO:	PJL11030		
	SCALE	SHEET	REV.
	1:1	1/1	A1