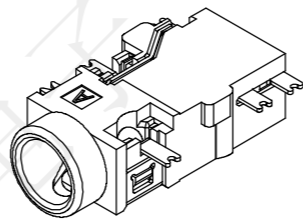
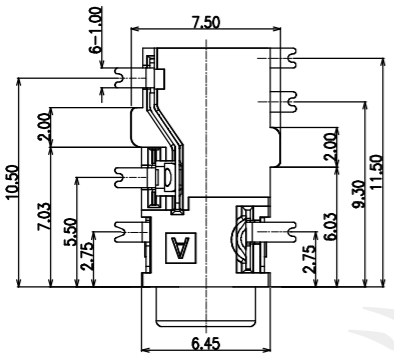


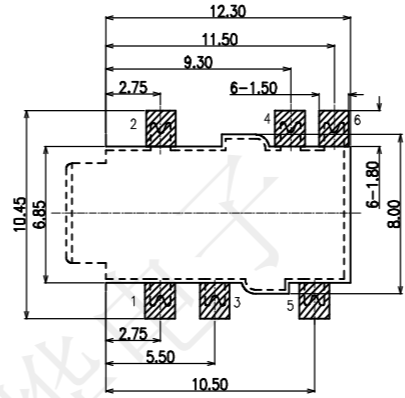
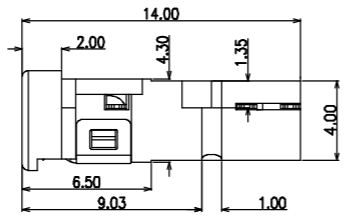
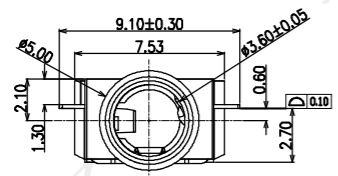
| | | | | | |
|------|---------|-------------|------|-------|------|
| REV. | ECN NO. | DESCRIPTION | DRAW | APPD. | DATE |
| A | --- | | | | |



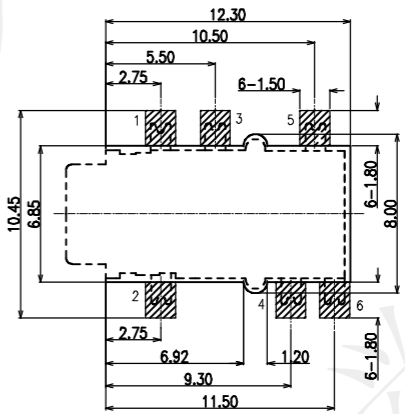
3D VIEW



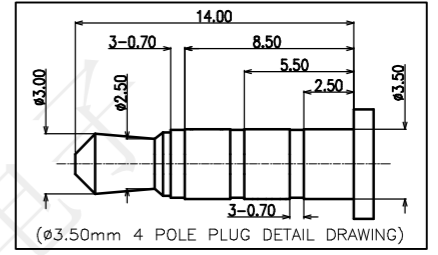
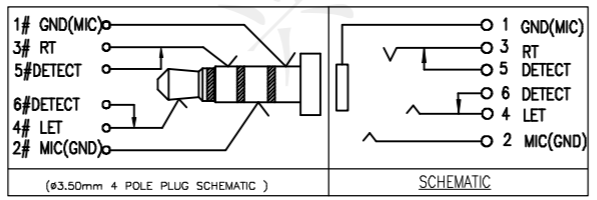
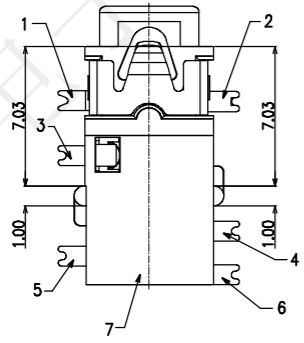
- NOTES:
- REQUEST OF THE SPECIFICATION:
 - CONTACT CURRENT RATING: 1A;
 - CONTACT RESISTANCE: 100 mΩ MAX.;
 - INSULATION RESISTANCE: 100MΩ MIN.;
 - DIELECTRIC WITHSTANDING: 500V AC MIN.;
 - DURABILITY: 5,000 CYCLES MIN.;
 - CONNECTOR MATING FORCES: 30N MAX.;
 - CONNECTOR UNMATING FORCES: 3N MIN.;



正贴 P.C.B. LAYOUT TOP VIEW



反贴 P.C.B. LAYOUT TOP VIEW



(ø3.50mm 4 POLE PLUG DETAIL DRAWING)

受控文件

| ITEM | NAME | Q'TY | DESCRIPTION | NOTE |
|------|-------------|------|---|--------|
| 7 | HOUSING | 1 | HIGHT TEMPERATURE PLASTIC COLOR BLACK | |
| 6 | TERMINAL 6# | 1 | STAINLESS STEEL; NICKEL UNDER PLATING OVERALL,GOLD FLASH ON SOLDER AREA | T=0.20 |
| 5 | TERMINAL 5# | 1 | STAINLESS STEEL; NICKEL UNDER PLATING OVERALL,GOLD FLASH ON SOLDER AREA | T=0.20 |
| 4 | TERMINAL 4# | 1 | COPPER ALLOY; NICKEL UNDER PLATING OVERALL,GOLD FLASH ON SOLDER AREA ;GOLD FLASH ON CONTACT AREA | T=0.20 |
| 3 | TERMINAL 3# | 1 | STAINLESS STEEL; NICKEL UNDER PLATING OVERALL,GOLD FLASH ON SOLDER AREA ;GOLD FLASH ON CONTACT AREA | T=0.20 |
| 2 | TERMINAL 2# | 1 | COPPER ALLOY; NICKEL UNDER PLATING OVERALL,GOLD FLASH ON SOLDER AREA ;GOLD FLASH ON CONTACT AREA | T=0.20 |
| 1 | TERMINAL 1# | 1 | STAINLESS STEEL; THE BOTTOM OF THE NICKEL; THE WHOLE GOLD FLASH PLATING. | T=0.20 |

深圳市兴烨电子有限公司
ShenZhen XingYe Electronics co., Ltd

| | | |
|------------|-------------|-----------|
| TOLERANCE | | |
| X.X ±0.30 | X.° ±2° | APPD: 陈爱光 |
| .XX ±0.20 | .X.° ±1° | CHED: 施立敏 |
| .XXX ±0.10 | .XX.° ±0.5° | DRAW: 马洪飞 |
| UNITS | mm | |

| | | |
|----------------|-------------------|------|
| Series Name : | | |
| Product Name : | PJ-342有头沉板1.3贴片编带 | |
| Part NO: | PJL22019 | |
| SCALE | SHEET | REV. |
| 1:1 | 1/1 | A1 |