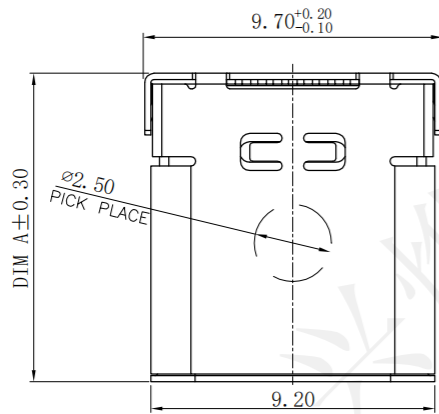
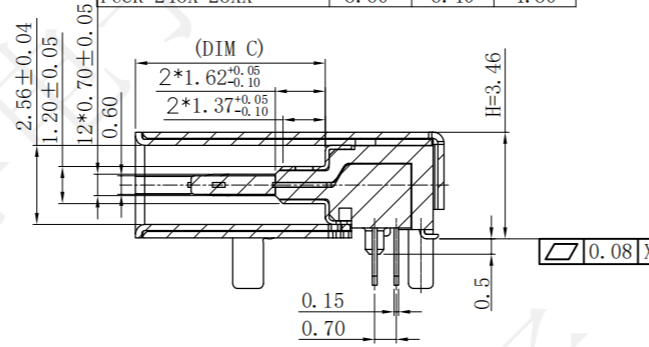


REV.	ECN NO.	DESCRIPTION	DRAW	APPD.	DATE
A	---				

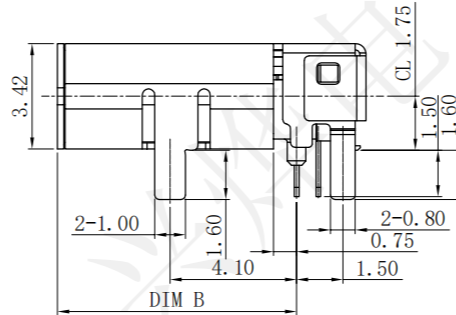
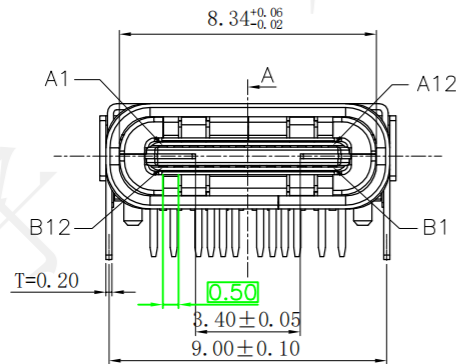


P/N:	DIM A	DIM B	DIM C
FUCR-248X-22XX	9.95	7.75	6.15
FUCR-248X-28XX	8.60	6.40	4.80

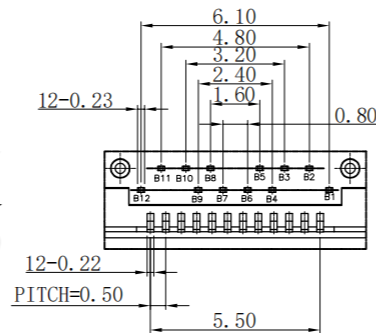
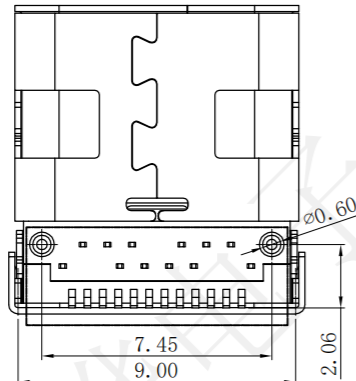


Section A-A
Scale 1:1

- MECHANICAL:
 - INSERTION: 5°~20N.
 - EXTRACTION: 8°~20N AFTER TEST.
 - DURABILITY: 10000 CYCLES
- ELECTRICAL:
 - CURRENT: 5A FOR VBUS;
 - 1.25A FOR GND PIN.
 - 0.25A FOR OTHER.
 - VOLTAGE: 20 V MAX
 - WITHSTANDING VOLTAGE: 100V AC R. M. S.
 - CONTACT RESISTANCE: 40mΩ MAX.
 - INSULATION RESISTANCE: 100MΩ MIN.
- ENVIRONMENTAL
 - TEMPERATURE RANGE -55° C ~ +85° C



受控文件



Detail A
Scale 1:1

NO.	Part name	Material	Remarks
4	Front shell	Stainless steel	Ni/SN plated
3	Mid plate	Stainless steel	
2	Contact	Copper alloy	Au/Ni plated
1	Housing	LCP	Black

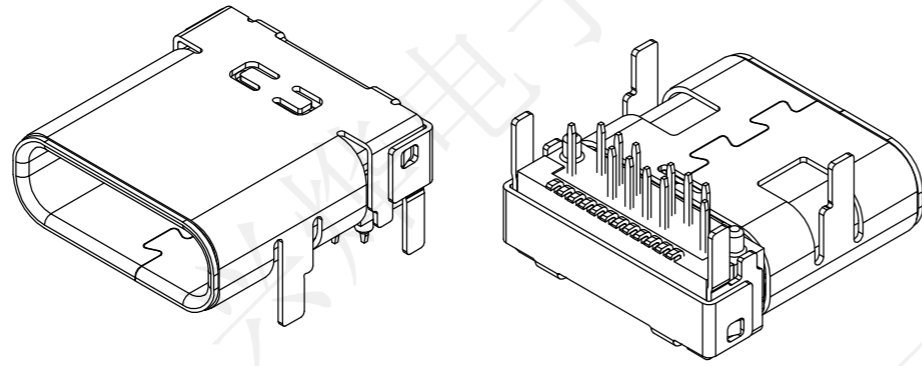
深圳市兴烨电子有限公司
Shenzhen XingYe Electronics co., Ltd

TOLERANCE		
X.X	±0.30	X.° ±2°
.XX	±0.20	.X.° ±1°
.XXX	±0.10	.XX.° ±0.5°
UNITS	mm	

Series Name :			
Product Name :			
TYPE-CF-24P板上四脚插SMT+DIP L10.0双壳			
Part NO: UCL27072			
SCALE	SHEET	REV.	
1:1	1/1	A1	

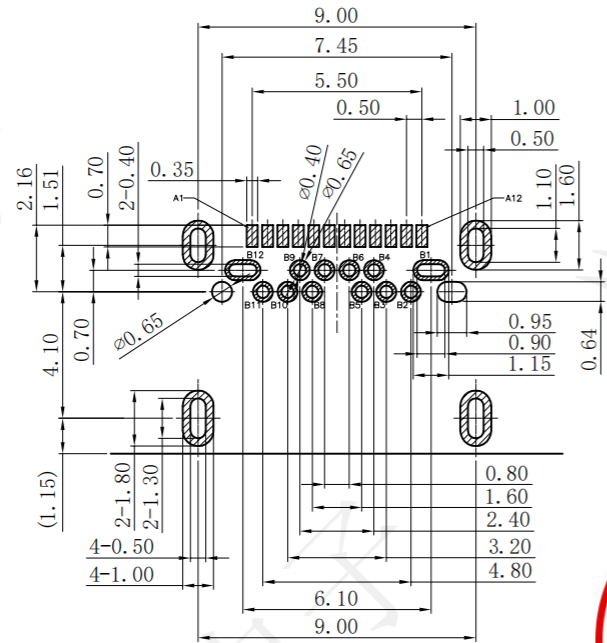
APPD: 陈爱光
CHED: 施立敏
DRAW: 马洪飞

REV.	ECN NO.	DESCRIPTION	DRAW	APPD.	DATE
A	---				



USB TYPE-C FULL-FEATURED RECEPTACLE INTERFACE PIN ASSIGNMENTS

PIN	Signal Name	Description	PIN	Signal Name	Description
A1	GND	Ground return	B12	GND	Ground return
A2	SSTXp1	Positive half of first SuperSpeed TX differential pair	B11	SSRXp1	Positive half of first SuperSpeed RX differential pair
A3	SSTXn1	Negative half of first SuperSpeed TX differential pair	B10	SSRXn1	Negative half of first SuperSpeed RX differential pair
A4	Vbus	Bus Power	B9	Vbus	Bus Power
A5	CC1	Configuration Channel	B8	SBU2	Sideband Use (SBU)
A6	Dp1	Positive half of the USB 2.0 differential pair-Position 1	B7	Dn2	Negative half of the USB 2.0 differential pair-Position 2
A7	Dn1	Negative half of the USB 2.0 differential pair-Position 1	B6	Dp2	Positive half of the USB 2.0 differential pair-Position 2
A8	SBU1	Sideband Use (SBU)	B5	CC2	Configuration Channel
A9	Vbus	Bus Power	B4	Vbus	Bus Power
A10	SSRXn2	Negative half of second SuperSpeed RX differential pair	B3	SSTXn2	Negative half of second SuperSpeed TX differential pair
A11	SSRXp2	Positive half of second SuperSpeed RX differential pair	B2	SSTXp2	Positive half of second SuperSpeed TX differential pair
A12	GND	Ground return	B1	GND	Ground return



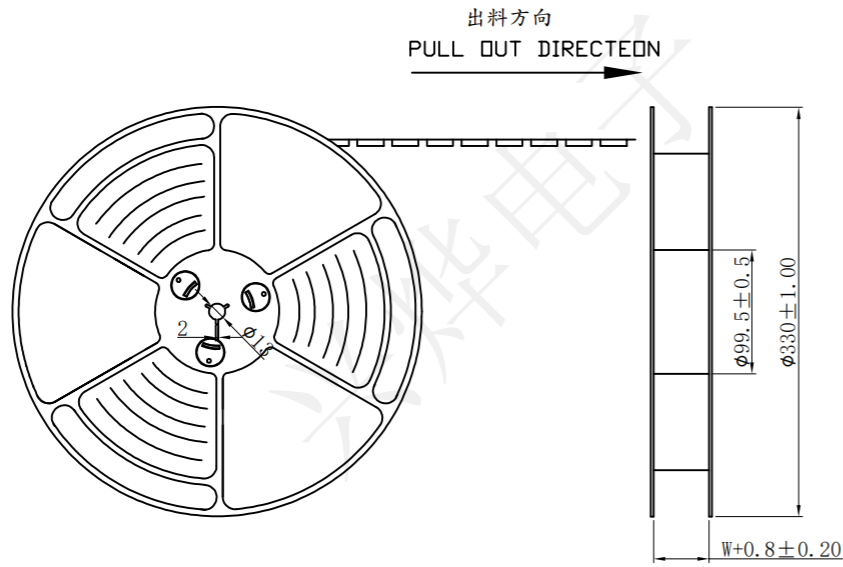
RECOMMEND P.C.B LAYOUT(COMPONENT SIDE)
TOLERANCE FOR PCB LAYOUT IS ± 0.05



受控文件

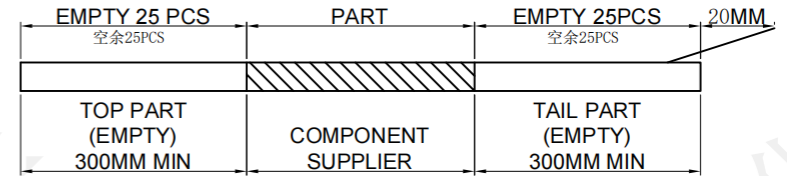
深圳市兴烨电子有限公司 ShenZhen XingYe Electronics co., Ltd		Series Name :	
TOLERANCE		Product Name :	
X.X ±0.30	X.° ±2°	TYPE-CF-24P板上四脚插SMT+DIP L10.0双壳	
.XX ±0.20	.X° ±1°	Part NO:	
.XXX ±0.10	.XX° ±0.5°	UCL27072	
UNITS	mm	APPD: 陈爱光	SCALE SHEET REV.
		CHED: 施立敏	1:1 1/1 A1
		DRAW: 马洪飞	

REV.	ECN NO.	DESCRIPTION	DRAW	APPD.	DATE
A	---				

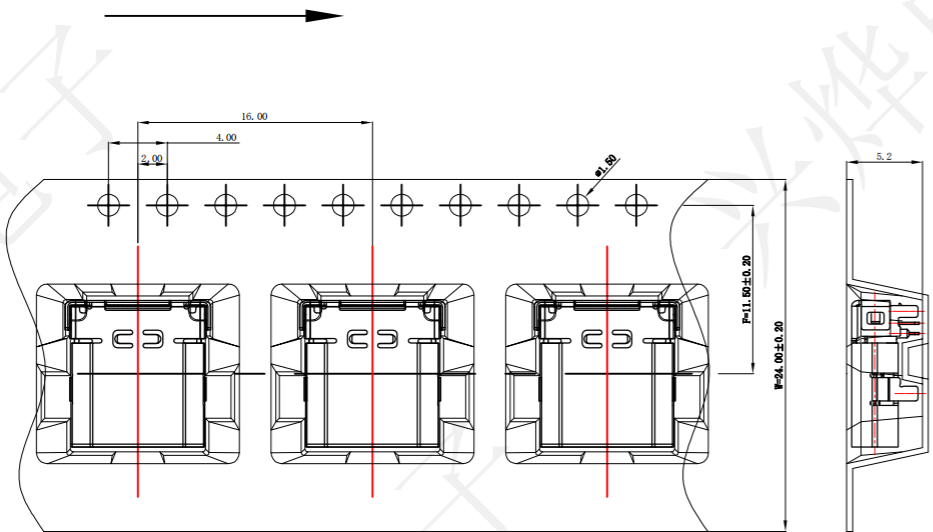


NOTES

1. 帶子引導長度
LEAD TAPE LENGTH
出料方向
PULL OUT DIRECTEON



2. 出貨運輸過程中一定注意：
THIS REQUIREMENT SHOULD BE APPLIED AT SHIPMENT：
卷帶在運輸過程中不能散開
PEELING OFF SHOULD NOT BE ALLOWED DURING TRANSPORTATION



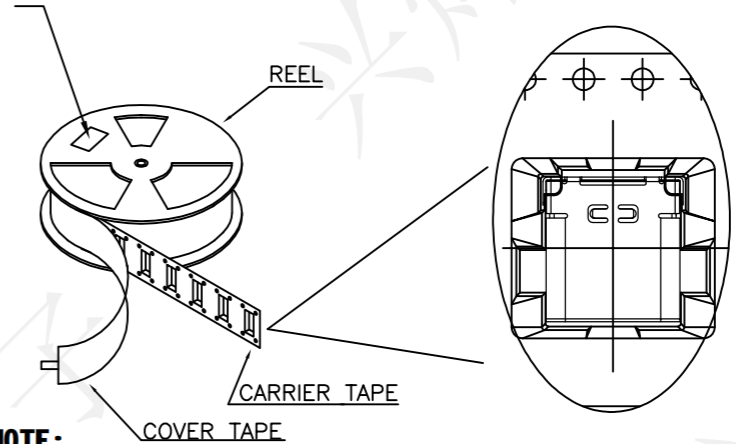
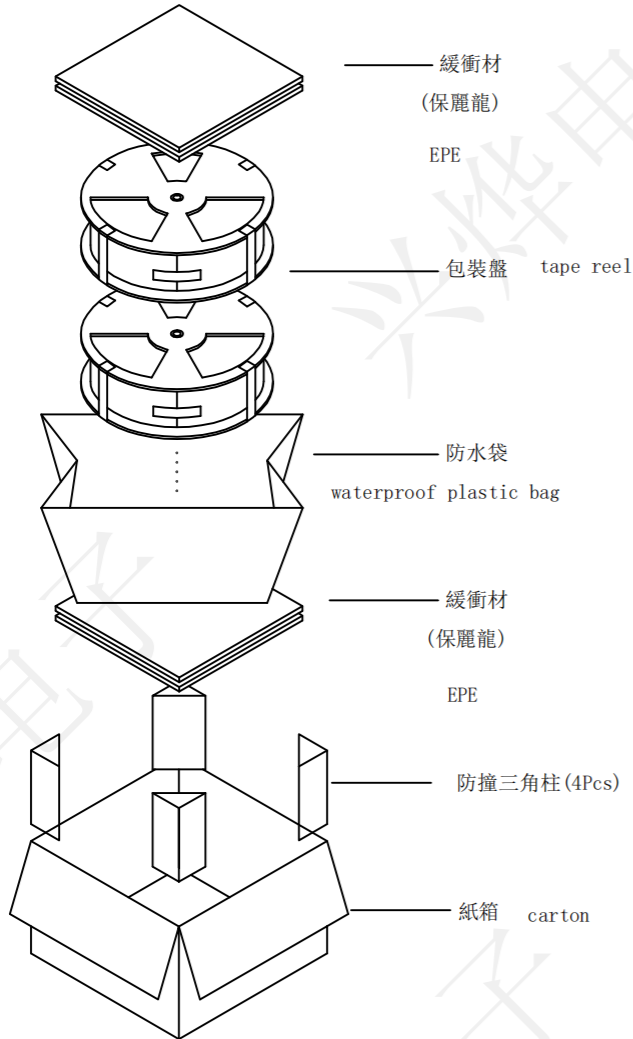
受控文件

深圳市兴烨电子有限公司 ShenZhen XingYe Electronics co., Ltd		Series Name :	
TOLERANCE X.X ±0.30 X.° ±2° .XX ±0.20 X.° ±1° .XXX ±0.10 XX.° ±0.5° UNITS mm		Product Name : TYPE-CF-24P板上四脚插SMT+DIP L10.0双壳	
APPD: 陈爱光 CHED: 施立敏 DRAW: 马洪飞		Part NO: UCL27072	
			SCALE SHEET REV. 1:1 1/1 A1

REV.	ECN NO.	DESCRIPTION	DRAW	APPD.	DATE
A	---				

at small positioning hole of the carrier tape side).
 標籤黏貼處 (朝捲裝包材的小定位孔一側)

Location of label sticking (label)



NOTE:

1. 每捲包裝數量及每箱裝箱數量如左下表格。
Packing q'ty of each reel & carton as below table shown.
2. 以上膠帶覆蓋下包裝帶經包裝機自粘包裝
Use cover tape to cover and hot melt machine to seal up.
3. 每個紙箱放2個珍珠棉
Every carton use 2pcs EPE.
4. 將裝滿產品的卷盤放入紙箱并以膠帶封口
Put reels in the carton and use adhesive tape to seal up.



受 控 文 件

深圳市兴烨电子有限公司 ShenZhen XingYe Electronics co., Ltd		Series Name :		
		Product Name : TYPE-CF-24P板上四脚插SMT+DIP L10.0双壳		
TOLERANCE		Part NO: UCL27072		
X.X ±0.30	X° ±2°	APPD: 陈爱光	SCALE SHEET REV. 1:1 1/1 A1	
.XX ±0.20	.X° ±1°	CHED: 施立敏		
.XXX ±0.10	XX° ±0.5°	DRAW: 马洪飞		
UNITS	mm			